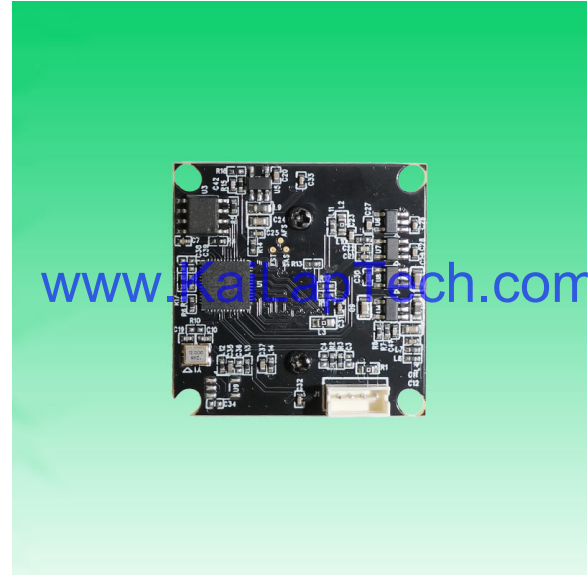


**KLT-USB-1635 V1****8.79MP 1635 Sony IMX166 M12 Fixed Focus USB 2.0 Camera Module**

KLT-USB-1635 V1 is an 8.79MP Fixed Focus USB camera module based on 1/3.2" IMX166 image sensor. It delivers high-speed, 4K resolution ultra sharp image.

The S-mount (M12) lens holder enables customers to choose different lens as per varies applications. This camera module is ideal solution for face recognition, identity detection, automotive, access control.

**Key Features**

- 4K resolution (3576 x 2512) Sony IMX166 sensor
- High speed USB 2.0 Plug and Play
- MJPG and YUV2 output format
- Low power consumption
- Compact size
- UVC compliant to Windows, Linux, OS with UVC driver
- USB OTG (On-The-Go) support



## KLT-USB-1635 V1

### 8.79MP 1635 Sony IMX166 M12 Fixed Focus USB 2.0 Camera Module

|                         |  |
|-------------------------|--|
| Camera Module No.       | KLT-USB-1635 V1  |
| Resolution              | 8.79MP   |
| Image Sensor            | IMX166   |
| Sensor Type             | 1/3.2"   |
| Pixel Size              | 1.4 um x 1.4 um  |
| EFL                     | 2.14 mm  |
| F.NO                    | 2.40   |
| Pixel                   | 3576 x 2512  |
| View Angle              | 144°(DFOV) 126°(HFOV) 76°(VFOV)  |
| Lens Dimensions         | 13.20 x 13.20 x 23.20 mm   |
| Module Type             | Fixed Focus  |
| Lens Model              | KLT-LENS-1635 V1   |
| Interface               | USB 2.0  |
| Output Format           | MJPEG / YUV2   |
| Auto Control            | Saturation, Contrast, Acutance<br>White Balance, Exposure  |
| Audio (Optional)        | Digital Microphone, Single / Dual Channel  |
| Input Voltage           | DC 5V  |
| Working Current         | Max 500mA  |
| PCB Size                | 32 x 32 mm   |
| System Compatibility    | Windows XP (SP2, SP3), Vista, 7, 8, 10, 11<br>Android, Mac OS, Linux or OS with UVC Driver<br>Raspberry Pi by USB Port |
| Software for USB Camera | AMCAP, Webcam Viewer, V4L2 Controls<br>Contacam, VLC Player, MotionEye OS<br>iSpy, ZoneMider, Yawcam                   |
| Lens Type               | 650nm IR Cut   |
| Operating Temperature   | -30°C to +70°C   |
| USB Cable               | KLT-Cable-U015   |

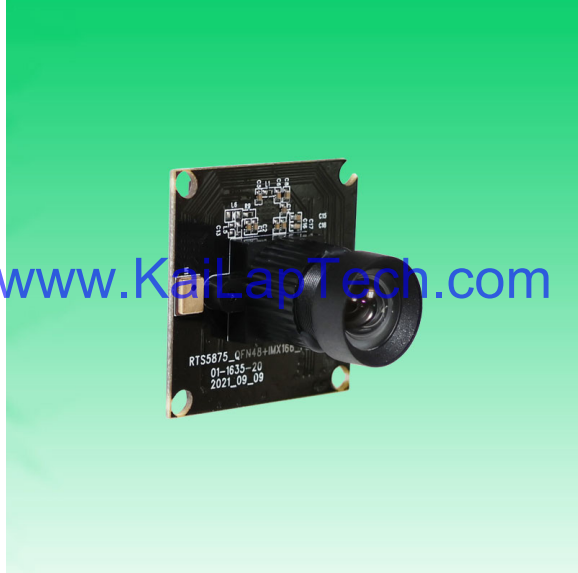
Wide Compatibility with Windows, Android, Mac OS, Linux, or Raspberry Pi



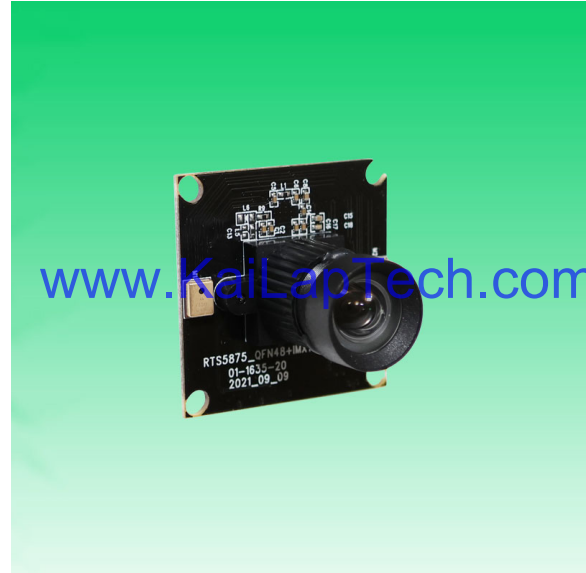


## KLT-USB-1635 V1

8.79MP 1635 Sony IMX166 M12 Fixed Focus USB 2.0 Camera Module



Top View



Side View

[www.KaiLapTech.com](http://www.KaiLapTech.com)

[www.KaiLapTech.com](http://www.KaiLapTech.com)



Bottom View



Mating Connector



## KLT-USB-1635 V1

### 8.79MP 1635 Sony IMX166 M12 Fixed Focus USB 2.0 Camera Module

| FORMAT | RESOLUTION          | FRAME RATE |
|--------|---------------------|------------|
|        |                     | USB 2.0    |
| MJPG   | 640 x 480 (VGA)     | 30 FPS     |
|        | 1280 x 720 (720P)   | 30 FPS     |
|        | 1920 x 1080 (1080P) | 15 FPS     |
|        | 2592 x 1944 (5MP)   | 15 FPS     |
|        | 3264 x 2448 (8MP)   | 15 FPS     |
| YUY2   | 640 x 480 (VGA)     | 30 FPS     |
|        | 1280 x 720 (720P)   | 5 FPS      |
|        | 1920 x 1080 (1080P) | 2 FPS      |
|        | 2592 x 1944 (5MP)   | 2 FPS      |
|        | 3264 x 2448 (8MP)   | 2 FPS      |



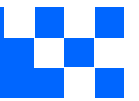


[www.KaiLapTech.com](http://www.KaiLapTech.com) [www.KaiLapTech.com](http://www.KaiLapTech.com)

[www.KaiLapTech.com](http://www.KaiLapTech.com) [www.KaiLapTech.com](http://www.KaiLapTech.com)



[www.KaiLapTech.com](http://www.KaiLapTech.com) [www.KaiLapTech.com](http://www.KaiLapTech.com)

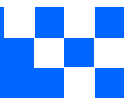


[www.KaiLapTech.com](http://www.KaiLapTech.com) [www.KaiLapTech.com](http://www.KaiLapTech.com)

[www.KaiLapTech.com](http://www.KaiLapTech.com) [www.KaiLapTech.com](http://www.KaiLapTech.com)



[www.KaiLapTech.com](http://www.KaiLapTech.com) [www.KaiLapTech.com](http://www.KaiLapTech.com)

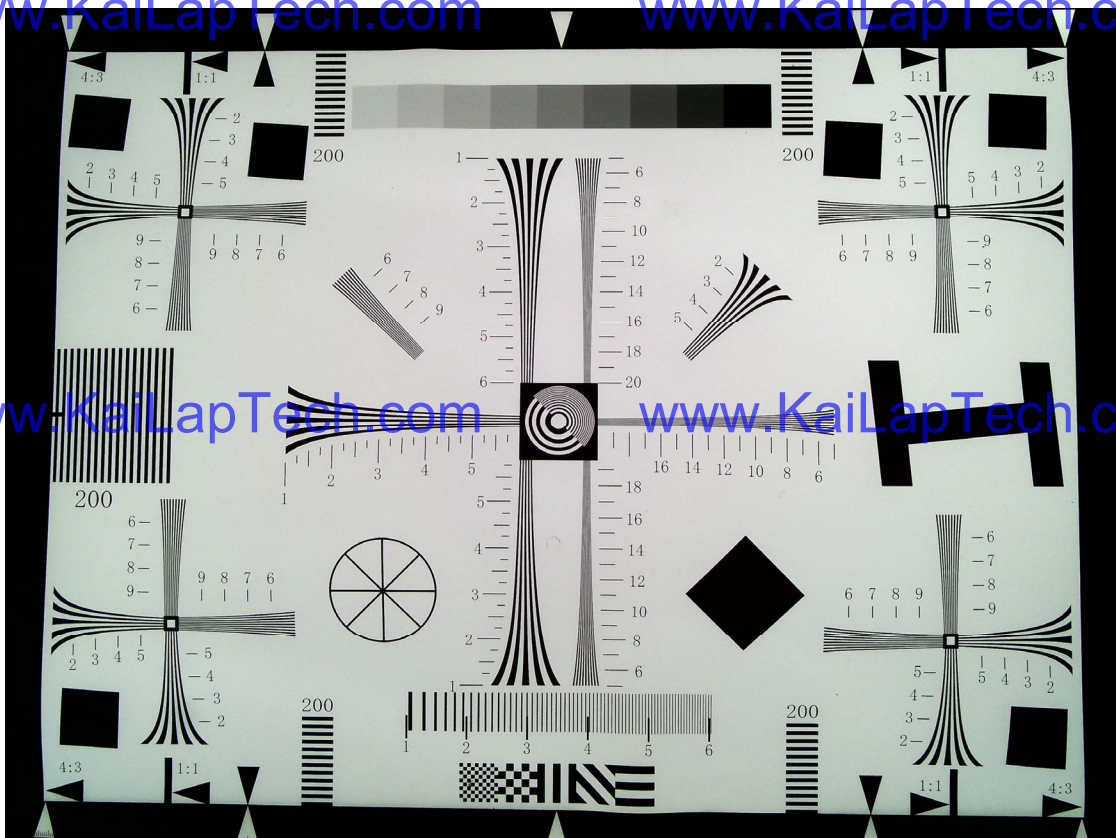


*your BEST camera module partner*

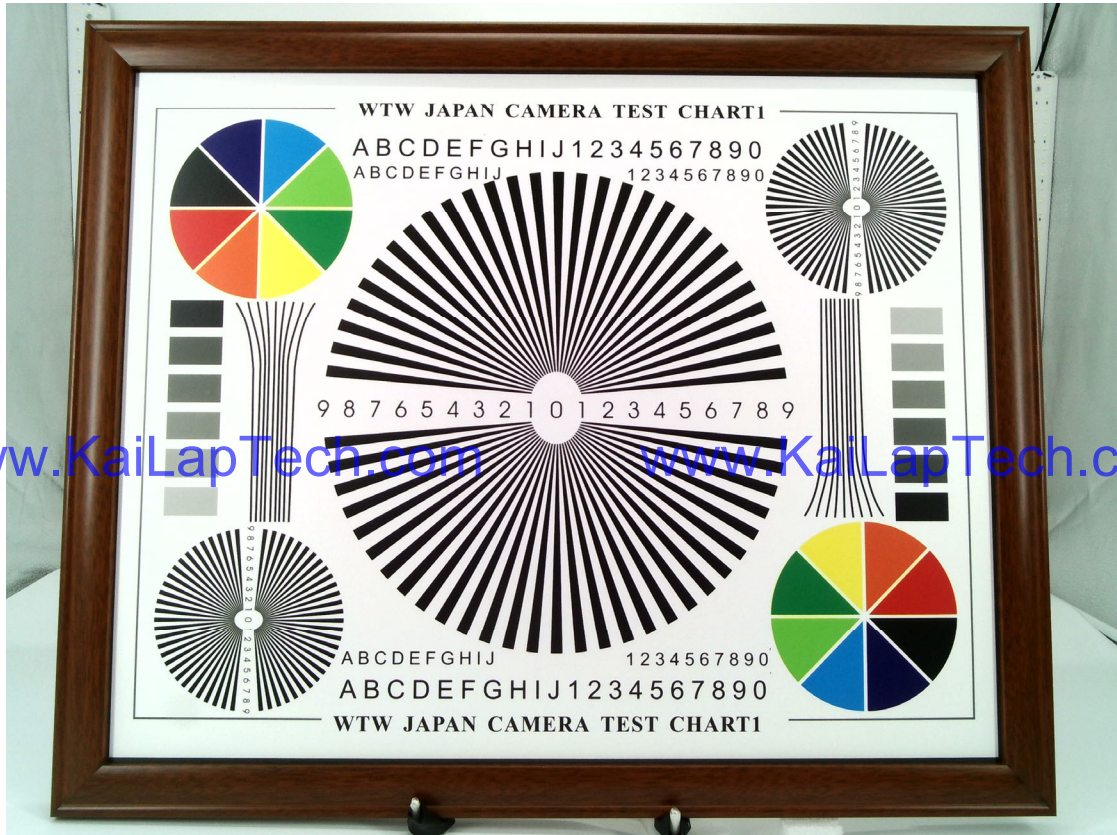


[www.KaiLapTech.com](http://www.KaiLapTech.com)

[www.KaiLapTech.com](http://www.KaiLapTech.com)



[www.KaiLapTech.com](http://www.KaiLapTech.com)

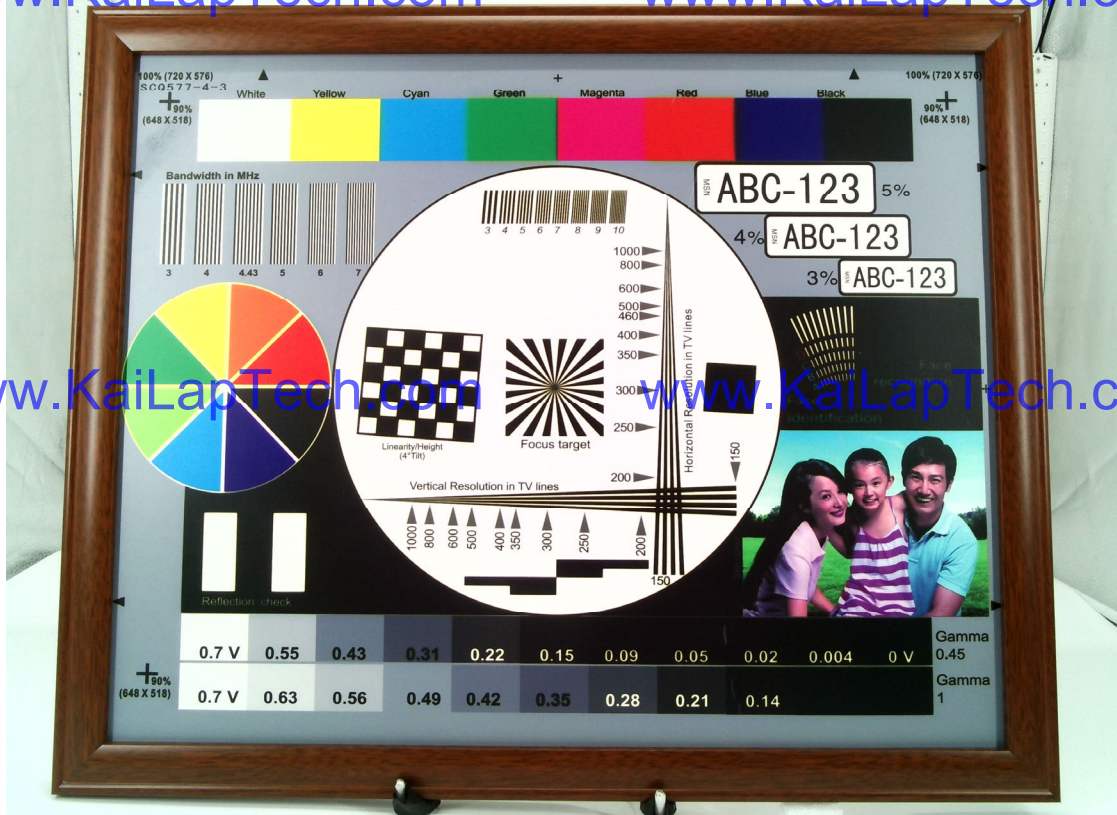


[www.KaiLapTech.com](http://www.KaiLapTech.com)

[www.KaiLapTech.com](http://www.KaiLapTech.com)

[www.KaiLapTech.com](http://www.KaiLapTech.com)

[www.KaiLapTech.com](http://www.KaiLapTech.com)

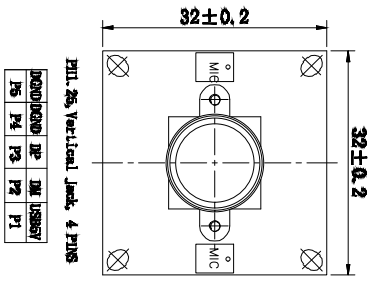
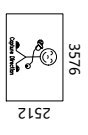


[www.KaiLapTech.com](http://www.KaiLapTech.com)

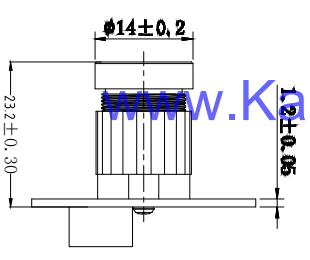
[www.KaiLapTech.com](http://www.KaiLapTech.com)



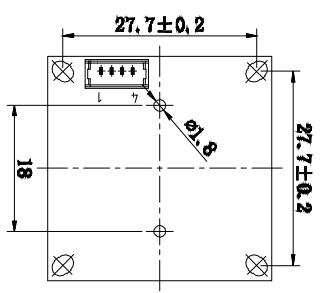
|         |               |           |
|---------|---------------|-----------|
| Version | Information   | Date      |
| V1.0    | First Version | 8-16-2022 |



**TOP VIEW**



**RIGHT VIEW**



**BOTTOM VIEW**

**Parameters:**

- 1、Sensor specification:
  - Image Sensor: IMX166
  - Pixel: 1.4um×1.4um
  - Lens Type: 1/3.2
- Important Voltage Description: USB 5V (external power supply);

**2 Lens specification:**

- FOV: 144°(D);126°(H);76°(V)
- F/#: 2.4
- TVDistortion: < TBD
- Focal length: 2.14mm
- Composition: 4G2P+IR FILTER
- IR Cut Coating: 650nm±10nm@50%

Kai Lap Technologies Group Ltd

|             |       |                  |                 |
|-------------|-------|------------------|-----------------|
| Designed By | Keyan | Model Name:      | KLT-USB-1635 V1 |
| Checked By  | Jacky | Projection Type: | Third Angle     |
|             |       | Unit:            | mm              |
|             |       | Scale:           | 1:1             |
|             |       | Material:        | -----           |
|             |       | Sheet:           | 1 of 1          |
|             |       | Version:         | 1/0             |

A

B

C

D

E

2

2

1

1

3

3

www.KaiLapTech.com

www.KaiLapTech.com

www.KaiLapTech.com

www.KaiLapTech.com

www.KaiLapTech.com

www.KaiLapTech.com

Diagonal 6.1 mm (Type 1/3.2) CMOS Image Sensor with Square Pixel for Colour Cameras

# IMX166PQH5-C

## Description

The IMX166PQH5-C is a diagonal 6.1 mm (Type 1/3.2) CMOS active pixel type image sensor with a square pixel array and 8.79M effective pixels. This chip operates with three power supplies, analogue 2.7 V, digital 1.2 V, and IF 1.8 V, and has low power consumption. High sensitivity, low dark current, and no smear are achieved through the adoption of R, G, and B primary colour pigment mosaic filters. This chip features an electronic shutter with variable charge-storage time.

In addition, this product is designed for use in cellular phone. When using this for another application, Sony does not guarantee the quality and reliability of product.

Therefore, don't use this for applications other than cellular phone. Consult your Sony sales representative if you have any questions.

## Features

- ◆ CMOS active pixel type dots
- ◆ 2-wire serial communication circuit on chip
- ◆ CSI2 serial data output
- ◆ Timing generator, H and V driver circuits on chip
- ◆ CDS/PGA on chip
- ◆ 10-bit A/D converter on chip
- ◆ Automatic optical black (OB) clamp circuit on chip
- ◆ PLL on chip (rectangular wave/sine wave)
- ◆ High sensitivity, low dark current, no smear
- ◆ Excellent anti-blooming characteristics
- ◆ Variable-speed shutter function (1 H units)
- ◆ R, G, B primary colour pigment mosaic filters on chip
- ◆ Max. 45 frame/s in all-pixel scan mode
- ◆ Pixel rate: 398 MHz (All-pixel, 45 frame/s)



\* "Exmor R" is a trademark of Sony Corporation. The "Exmor R" is a Sony's CMOS image sensor with significantly enhanced imaging characteristics including sensitivity and low noise by changing fundamental structure of "Exmor" pixel adopted column parallel A/D converter to back-illuminated type.

Sony reserves the right to change products and specifications without prior notice.

This information does not convey any license by any implication or otherwise under any patents or other right.

Application circuits shown, if any, are typical examples illustrating the operation of the devices. Sony cannot assume responsibility for a problems arising out of the use of these circuits.



your BEST camera module partner

## Cameras Applications



[www.KaiLapTech.com](http://www.KaiLapTech.com)



[www.KaiLapTech.com](http://www.KaiLapTech.com)



[www.KaiLapTech.com](http://www.KaiLapTech.com)

[www.KaiLapTech.com](http://www.KaiLapTech.com)



[www.KaiLapTech.com](http://www.KaiLapTech.com)



[www.KaiLapTech.com](http://www.KaiLapTech.com)





## Camera Reliability Test

| Reliability Inspection Item |  | Testing Method  | Acceptance Criteria     |                         |
|-----------------------------|--|---|-------------------------|-------------------------|
| Category                    | Item   |   |                         |                         |
| Environmental               | Storage Temperature                                      | High 60°C 96 Hours  | Temperature Chamber     | No Abnormal Situation   |
|                             |  | Low -20°C 96 Hours  | Temperature Chamber     | No Abnormal Situation   |
|                             | Operation Temperature                                    | High 60°C 24 Hours  | Temperature Chamber     | No Abnormal Situation   |
|                             |  | Low -20°C 24 Hours  | Temperature Chamber     | No Abnormal Situation   |
|                             | Humidity   | 60°C 80% 24 Hours   | Temperature Chamber     | No Abnormal Situation   |
|                             | Thermal Shock  | High 60°C 0.5 Hours<br>Low -20°C 0.5 Hours<br>Cycling in 24 Hours | Temperature Chamber     | No Abnormal Situation   |
| Physical                    | Drop Test (Free Falling)                                 | Without Package 60cm  | 10 Times on Wood Floor  | Electrically Functional |
|                             |  | With Package 60cm   | 10 Times on Wood Floor  | Electrically Functional |
|                             | Vibration Test   | 50Hz X-Axis 2mm 30min   | Vibration Table         | Electrically Functional |
|                             |  | 50Hz Y-Axis 2mm 30min   | Vibration Table         | Electrically Functional |
|                             |  | 50Hz Z-Axis 2mm 30min   | Vibration Table         | Electrically Functional |
| Cable Tensile Strength Test | Loading Weight 4 kg<br>60 Seconds<br>Cycling in 24 Hours | Tensile Testing Machine   | Electrically Functional |                         |
| Electrical                  | ESD Test   | Contact Discharge 2 KV  | ESD Testing Machine     | Electrically Functional |
|                             |  | Air Discharge 4 KV  | ESD Testing Machine     | Electrically Functional |
|                             | Aging Test   | On/Off 30 Seconds<br>Cycling in 24 Hours                          | Power Switch            | Electrically Functional |
|                             | USB Connector  | On/Off 250 Times  | Plug and Unplug         | Electrically Functional |





| Inspection Item  |          | Inspection Method | Standard of Inspection      |  |
|------------------|----------|-------------------|-----------------------------|--|
| Category         | Item     |                   |                             |  |
| Appearance       | FPC/ PCB | Color             | The Naked Eye               | Major Difference is Not Allowed.           |
|                  |          | Be Torn/Chopped   | The Naked Eye               | Copper Crack Exposure is Not Allowed.      |
|                  |          | Marking           | The Naked Eye               | Clear, Recognizable (Within 30cm Distance) |
|                  | Holder   | Scratches         | The Naked Eye               | The Inside Crack Exposure is Not Allowed   |
|                  |          | Gap               | The Naked Eye               | Meet the Height Standard                   |
|                  |          | Screw             | The Naked Eye               | Make Sure Screws Are Presented (If Any)    |
|                  |          | Damage            | The Naked Eye               | The Inside Crack Exposure is Not Allowed   |
|                  | Lens     | Scratch           | The Naked Eye               | No Effect On Resolution Standard           |
|                  |          | Contamination     | The Naked Eye               | No Effect On Resolution Standard           |
|                  |          | Oil Film          | The Naked Eye               | No Effect On Resolution Standard           |
|                  |          | Cover Tape        | The Naked Eye               | No Issue On Appearance.                    |
|                  | Function | Image             | No Communication            | Test Board                                 |
| Bright Pixel     |          |                   | Black Board                 | Not Allowed In the Image Center            |
| Dark Pixel       |          |                   | White board                 | Not Allowed In the Image Center            |
| Blurry           |          |                   | The Naked Eye               | Not Allowed                                |
| No Image         |          |                   | The Naked Eye               | Not Allowed                                |
| Vertical Line    |          |                   | The Naked Eye               | Not Allowed                                |
| Horizontal Line  |          |                   | The Naked Eye               | Not Allowed                                |
| Light Leakage    |          |                   | The Naked Eye               | Not Allowed                                |
| Blinking Image   |          |                   | The Naked Eye               | Not Allowed                                |
| Bruise           |          |                   | Inspection Jig              | Not Allowed                                |
| Resolution       |          |                   | Chart                       | Follows Outgoing Inspection Chart Standard |
| Color            |          |                   | The Naked Eye               | No Issue                                   |
| Noise            |          |                   | The Naked Eye               | Not Allowed                                |
| Corner Dark      |          |                   | The Naked Eye               | Less Than 100px By 100px                   |
| Color Resolution |          |                   | The Naked Eye               | No Issue                                   |
| Dimension        | Height   | The Naked Eye     | Follows Approval Data Sheet |  |
|                  | Width    | The Naked Eye     | Follows Approval Data Sheet |  |
|                  | Length   | The Naked Eye     | Follows Approval Data Sheet |  |
|                  | Overall  | The Naked Eye     | Follows Approval Data Sheet |  |



## KLT Package Solutions

KLT Camera Module



Complete with Lens Protection Film



Tray with Grid and Space



Place Cameras on the Tray





## Camera Modules Package Solution

Full Tray of Cameras



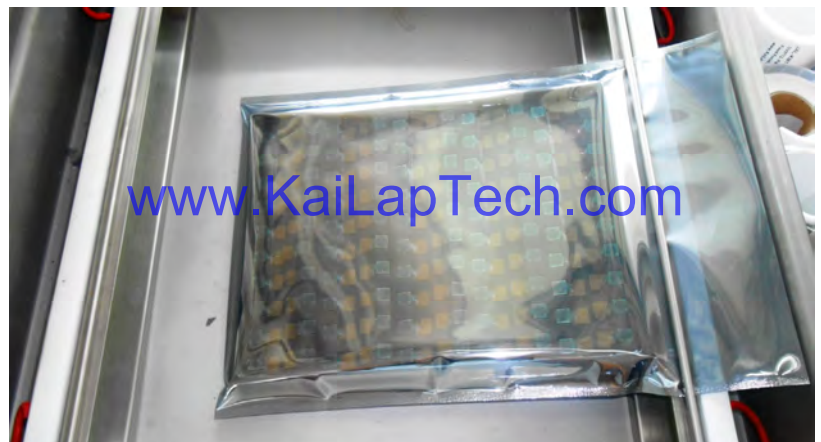
Cover Tray with Lid



Put Tray into Anti-Static Bag



Vacuum the Anti-Static Bag





## Camera Modules Package Solution

**Sealed Vacuum Bag with Labels**

- 1. Model and Description 2. Quantity 3. Shipping Date 4. Caution**







# CMOS CAMERA MODULES



*your BEST camera module partner*

## Large Order Package Solution

Place Foam Sheets Between Trays

Foam Sheets are Slightly Larger than Trays

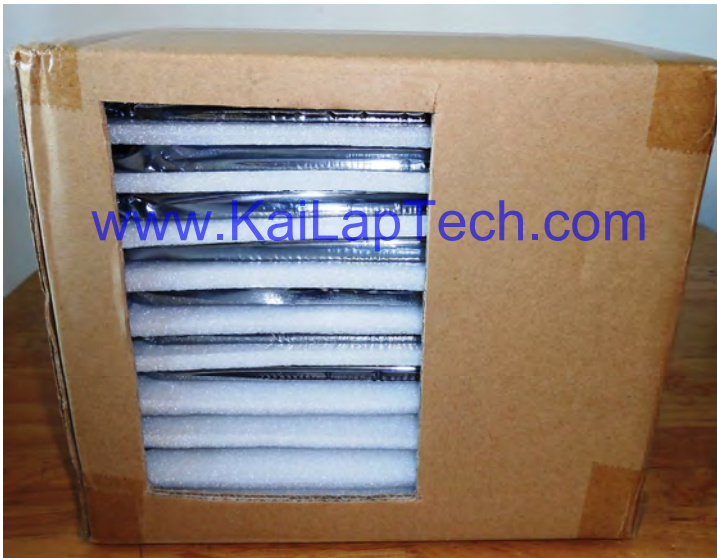


[www.KaiLapTech.com](http://www.KaiLapTech.com)

[www.KaiLapTech.com](http://www.KaiLapTech.com)

Place Foam Sheets and Trays into Box

Foam Sheets are Tightly Fitting Box



[www.KaiLapTech.com](http://www.KaiLapTech.com) [sales@KaiLapTech.com](mailto:sales@KaiLapTech.com) Tel: (852) 6908 1256 Fax: (852) 3017 6778

All rights reserved @ Kai Lap Technologies Group Ltd. Specifications subject to change without notice.



# CMOS CAMERA MODULES



*your BEST camera module partner*

## Small Order Package Solution

Place Foam Sheets and Trays into Small Box



[www.KaiLapTech.com](http://www.KaiLapTech.com)

Package in Small Box for Shipment

Foam Sheets are Nicely Fitting the Small Box



[www.KaiLapTech.com](http://www.KaiLapTech.com)

Place Small Boxes into Larger Box



[www.KaiLapTech.com](http://www.KaiLapTech.com) [sales@KaiLapTech.com](mailto:sales@KaiLapTech.com) Tel: (852) 6908 1256 Fax: (852) 3017 6778

All rights reserved @ Kai Lap Technologies Group Ltd. Specifications subject to change without notice.



## Carbon Box Package Solution

Seal the Carbon Box

Final Package Labelled Box



### Carbon Box Ready for Shipment

1. Delivery Address and Phone No.
2. Box No. and Ship Date
3. Fragile Caution





## Sample Order Package Solution

Place Sample into Small Anti-Static Bag



Place Connectors into Small Ant-Static Bag



### Sample Labels on the Small Bag

1. Camera Module or Connector Model
2. Shipping Date and Quantity
3. Caution





## Connectors Large Order Package Solution

Connectors in a Wheel



Label Connectors in the Wheel



The Wheel is Perfectly Fitting the Box



Connectors Box Ready for Shipment



## Company Kai Lap Technologies (KLT)

Kai Lap Technologies Group Limited. (KLT) was established in 2009, a next-generation technology driven manufacturer specialized in research, design, and produce of audio and video products. KLT is occupying 20,000 square feet automated plants with 100 employees of annual throughput 30,000,000 units cameras.

KLT provides OEM, ODM design, contract manufacturing, and builds the camera products. You may provide the requirements to us, even with a hand draft, our sales and engineering work together to meet your needs. We consider ourselves your last-term partner in developing practical and innovative solutions.

Our team covers everything from initial concept development to mass produced product. KLT specializes in customized camera design, raw material, electronic engineering, firmware/software development, product testing, and packing design. Our experienced strategic supply systems offer a robust and dependable manufacturing capacity for orders of various sizes.

[www.KaiLapTech.com](http://www.KaiLapTech.com)

[www.KaiLapTech.com](http://www.KaiLapTech.com)



## Limited Warranty

KLT provides the following limited warranty if you purchased the Product(s) directly from KLT company or from KLT's website, [www.KaiLapTech.com](http://www.KaiLapTech.com). Product(s) purchased from other sellers or sources are not covered by this Limited Warranty. KLT guarantees that the Product(s) will be free from defects in materials and workmanship under normal use for a period of one (1) year from the date you receive the product ("Warranty Period").

For all Product(s) that contain or develop material defects in materials or workmanship during the Warranty Period, KLT will, at its sole option, either: (i) repair the Product(s); (ii) replace the Product(s) with a new or refurbished Product(s) (replacement Product(s) being of identical model or functional equivalent); or (iii) provide you a refund of the price you paid for the Product(s).

This Limited Warranty of KLT is solely limited to repair and/or replacement on the terms set forth above. KLT is not reliable or responsible for any subsequent events.





# CMOS CAMERA MODULES



*your BEST camera module partner*

## KLT Strength

### Powerful Factory



[www.KaiLapTech.com](http://www.KaiLapTech.com)

[www.KaiLapTech.com](http://www.KaiLapTech.com)

### Professional Service



[www.KaiLapTech.com](http://www.KaiLapTech.com)

[www.KaiLapTech.com](http://www.KaiLapTech.com)

### Promised Delivery



[www.KaiLapTech.com](http://www.KaiLapTech.com)

[www.KaiLapTech.com](http://www.KaiLapTech.com)



[www.KaiLapTech.com](http://www.KaiLapTech.com)   [sales@KaiLapTech.com](mailto:sales@KaiLapTech.com)   Tel: (852) 6908 1256   Fax: (852) 3017 6778

All rights reserved @ Kai Lap Technologies Group Ltd. Specifications subject to change without notice.